

# I'VE GOT THAT FEELIN'

GREG SCZEBEL

♩ = 114

2 BAR DRUMS ONLY

3 **B<sub>M</sub>**  
ADD BASS GUITAR ON GROOVE

7

11 **B<sub>M</sub>7** **A<sub>M</sub>A<sub>7</sub>/B** **B<sub>M</sub>**  
I'll admit it, I was taken by...

15 **B<sub>M</sub>7** **A<sub>M</sub>A<sub>7</sub>/B** **B<sub>7</sub>**

19 **P.C.** **E<sub>M</sub>9** **F#7** **B<sub>M</sub>7**

23 **E<sub>M</sub>9** **F#7** **B<sub>M</sub>7** **B<sub>7</sub>/D#**

27 **CH** **E<sub>M</sub>9** **F#<sub>M</sub>7** **B<sub>7</sub>** **G<sub>M</sub>A<sub>7</sub>7**  
I've got that feelin'

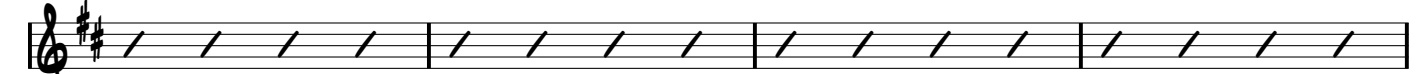
31 **F#<sub>M</sub>7** **B<sub>M</sub>7** **A<sub>M</sub>A<sub>7</sub>/B**  
SIMILAR TO INTRO GROOVE

I'VE GOT THAT FEELIN' - 2 OF 3

V2

B<sub>M</sub>7

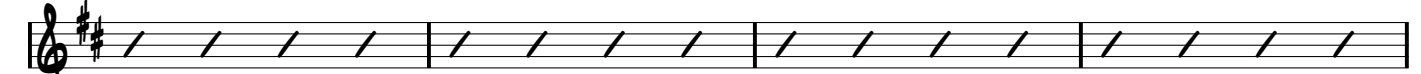
A<sub>MAT</sub>7/B B<sub>M</sub>



35 It's not uncommon, it can happen...

B<sub>M</sub>7

A<sub>MAT</sub>7/B B<sup>7</sup>/D<sup>#</sup>



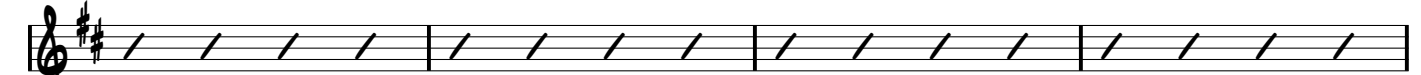
39

P.C.

E<sub>M</sub>7

F<sup>#</sup><sub>M</sub>7

B<sub>M</sub>7



43

E<sub>M</sub>7

F<sup>#</sup><sub>M</sub>7

F<sup>#</sup>7/A<sup>#</sup>

B<sub>M</sub>9

B<sup>7</sup>/D<sup>#</sup>

E<sub>M</sub>9



47

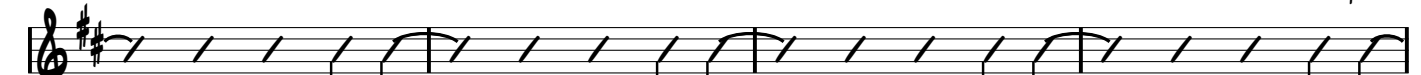
CH

F<sup>#</sup><sub>M</sub>7

F<sup>#</sup><sub>M</sub>7

B<sup>7</sup>

G<sub>MAT</sub>7



51 I've got that feelin'

F<sup>#</sup><sub>M</sub>7

F<sup>#</sup><sub>M</sub>7

B<sup>7</sup>

B<sup>7</sup>/D<sup>#</sup>

E<sub>M</sub>9



55

F<sup>#</sup><sub>M</sub>7

F<sup>#</sup><sub>M</sub>7

B<sup>7</sup>

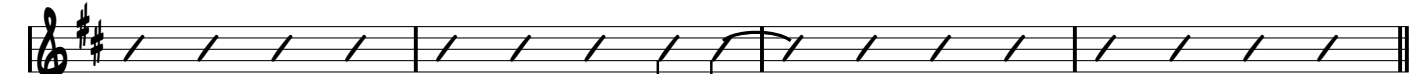
G<sub>MAT</sub>7



59 I've got that feelin'

F<sup>#</sup><sub>M</sub>7

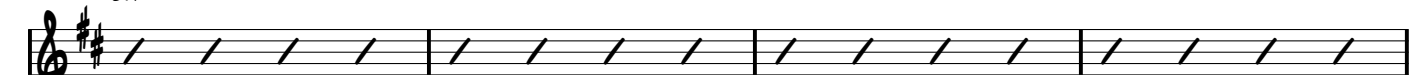
C<sub>MAT</sub>9



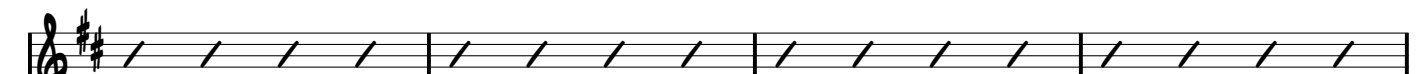
63

B

B<sub>M</sub>7



67 16 BAR BREAKDOWN



71

75

79

**CH**  
83

87

91

95